

# Adding external tools

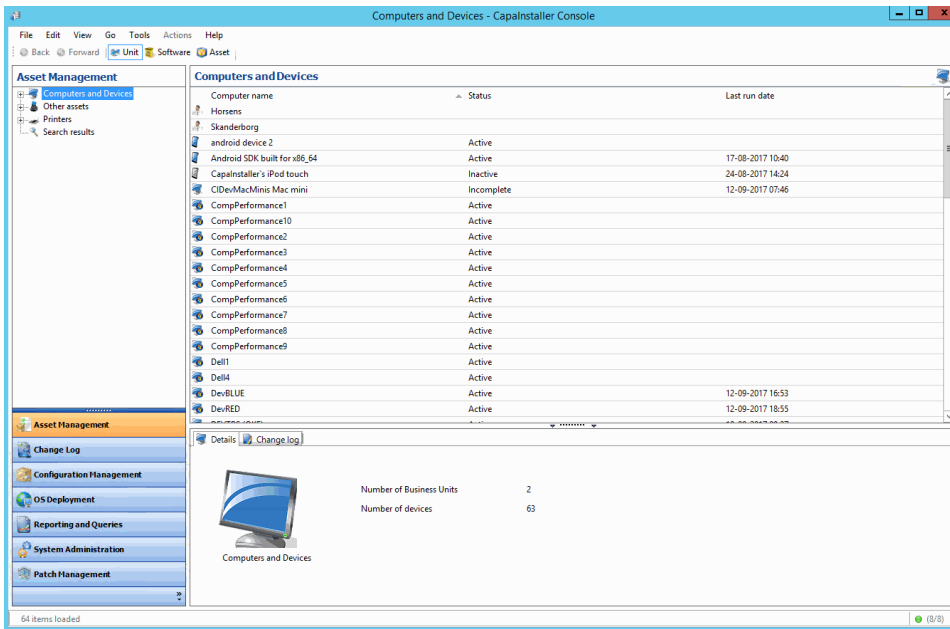
## Introduction

How to add and configure an external tool.

External tools can be configured for Mobile devices, desktop computers and users. Each category has different arguments that can be passed, based on the inventory collected for the relevant category.

## Adding an external tool

- Go to **System Administration**
- In the top menu, click **Tools -> External tools**
- Click **Add**
- **Type in** or use the **Browse** button for executable path and variables
- Optionally create or select a category
- Select a type - default is Computer



### ✓ Tips

- Categories can be used to group related tools together in a submenu
- You can type "\$" to get fast access to the argument menu
- Each type has different variables relating to the unit type
- Use the **Clone** functionality to quickly add a new external tool based on a previously created tool

## Variables

Computer	Mobile device	User
----------	---------------	------

Hardware Inventory	Hardware Inventory	User name
Custom Inventory	Custom Inventory	Full Name
Computer name	Phone Number	Email
IP address	IMEI	Phone Number(Primary Device)
MAC address	Serial Number	CMPID
UUID	UUID	BUID
Serialnumber	CMPID	
FQDN	BUID	
CMPID		
BUID		

## Import / Export

- The Import / Export functionality lets you back up your external tools including configurations as a simple file

## Reorder mode

- Check the **Reorder mode** checkbox and use the up/down buttons to organize the look of External tools menu